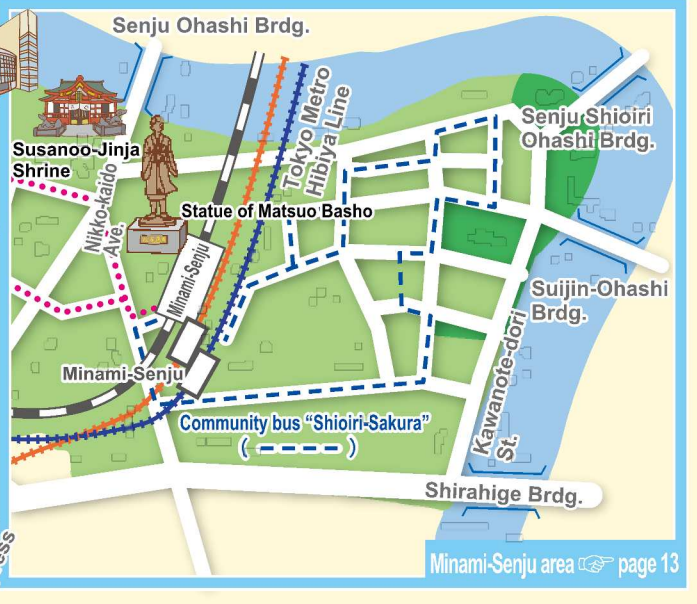
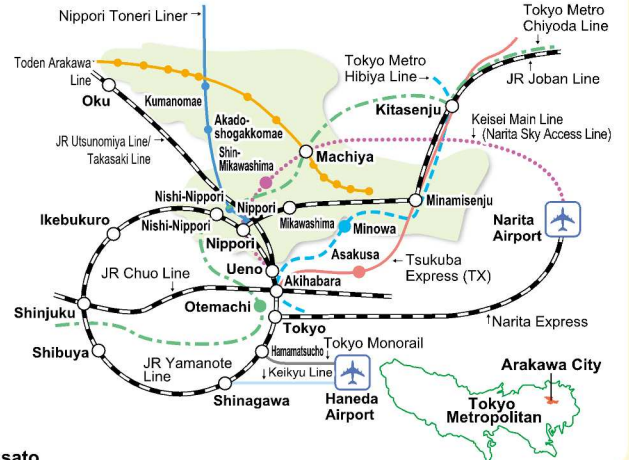


Arakawa sightseeing map



Tokyo	On foot	Otemachi	Tokyo Metro Chiyoda Line	Machiya
			About 13 minutes	
Haneda Airport	JR Yamanote Line	Akihabara	Tsukuba Express	Minamisenju
	About 4 minutes		About 8 minutes	
Narita Airport	JR Yamanote Line	Shinagawa	JR Yamanote Line	Nippori
	About 23 minutes		About 24 minutes	
			Keisei Skyliner	
			About 36 minutes	



Let's get around the city in a shared bicycle!



Shared bicycles are available in Arakawa City. As long as you take or return the bicycle at a dedicated cycle port, you can go anywhere with the shared bicycle inside or outside the city. You can drop off your bicycle at any port. Perfect for touring around the city.

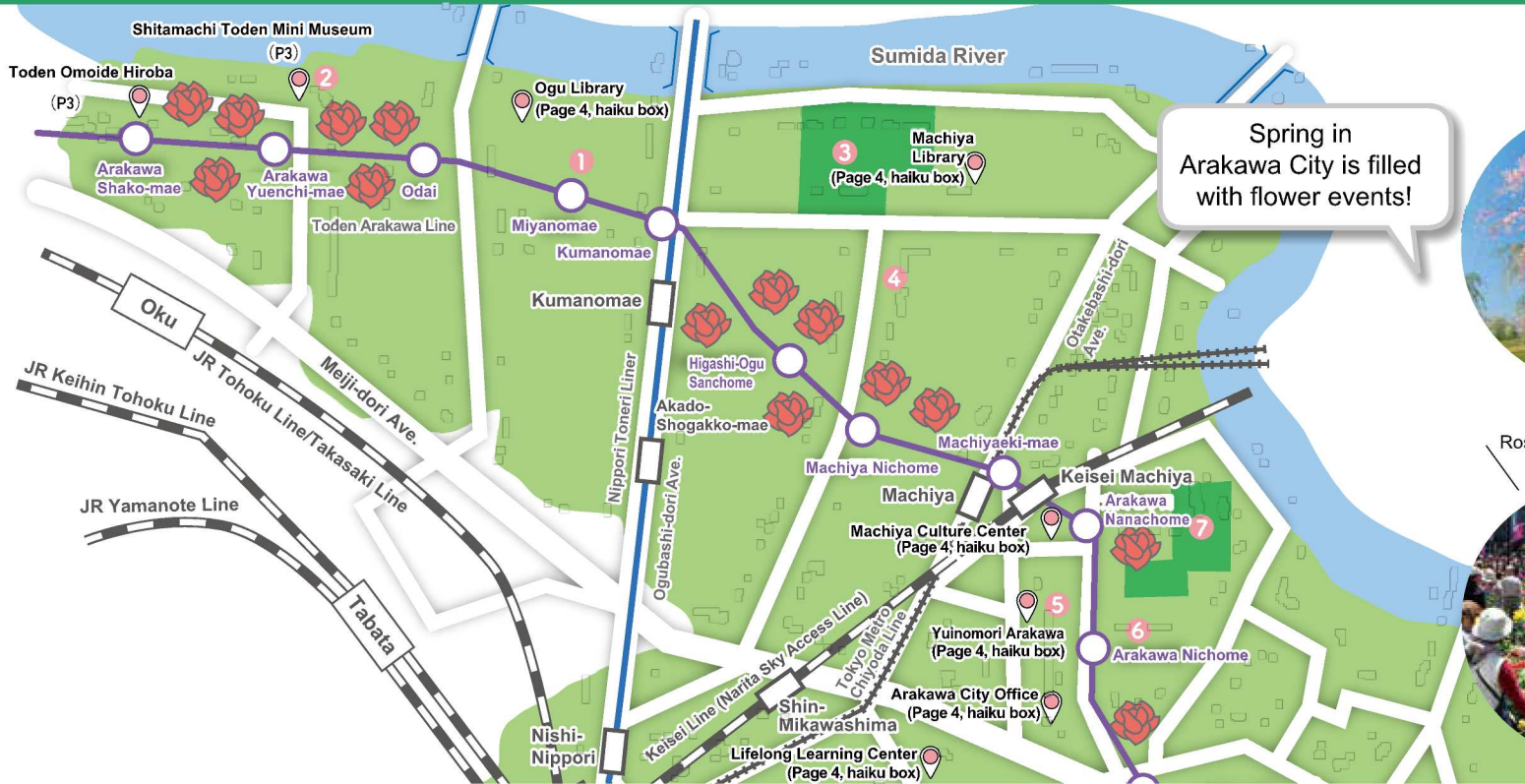
[Click here for details](#)



Nippori Tourist Information

Arakawa area Machiya area Ogu area

The Arakawa area is an old town area with narrow alleys between houses, eaves dotted with seasonal flowers, and small factories. The shopping streets are bustling with activity every day. The Machiya area has central stations for the Toden Arakawa Line, the Keisei Line, and the Tokyo Metro Chiyoda Line. The area provides great access to central Tokyo. The Nurie Museum (Coloring Museum), the only one in Japan, and shops that support young artists are located here. This is an area where the soul that supports old town culture is still alive. In the Ogu area, the Arakawa Amusement Park is a must-see in Arakawa City and is the only amusement park managed by a local city government in the 23 wards of Tokyo.



Spring in Arakawa City is filled with flower events!



Shidarezakura Festival (Weeping Cherry Festival)

(Metropolitan Ogunohara Park)

The Weeping Cherry Festival is held every year when 257 weeping cherry trees, planted around Metropolitan Ogunohara park and on the bank of Sumida River, are in full bloom. Stage shows and food stands will be open.
| Event date | Early April

Rose growing seminars are also popular



Arakawa Rose Market

(Near Machiyaeki-mae Station on the Toden Arakawa Line)

This event is held every year when roses are in full bloom along the Toden Arakawa Line. Rose pots and rose-related products are sold by local shops.
| Event date | Mid-May



1 Hachiman-Jinja Shrine

(3-7-3 Nishi-Ogu)

Although its foundation date is unknown, it is estimated that the shrine was established when the Ogu area became a territory of Tsuruoka Hachimangu, which is located in Kamakura, in 1312 at the end of the Kamakura period. The shrine enshrines a guardian god in Ogu renowned as a god of agriculture, industry, and commerce. A large, annual festival is held on the first Saturday and Sunday of August, and during the Shinko Festival, which is held once every four years, lines of floats and horses parade around the Ogu area.



2 Arakawa Amusement Park

(6-35-11 Nishi-Ogu)

The park features a ferris wheel, the slowest roller coaster in Japan, Animal Square, and more.
△Currently closed due to renovation work. Reopening is planned for spring 2022.



3 Metropolitan Ogunohara Park

(7-1 Higashi-Ogu)

A famous spot for weeping cherry trees. In addition, there is an open lawn and other open spaces, such as the Harappa Square and Clover Square, where you can enjoy the natural beauty of each season. Playground equipment and other facilities aren't available, but children can run around freely and play. You can observe several kinds of dragonflies that inhabit the area around the pond and wetland created by rainwater.



4 Nurie Museum

(4-11-8 Machiya)

It is the only museum in Japan dedicated to coloring. The museum collects and exhibits coloring books from Japan and overseas, centering on *Kiichino Nurie* ("Kiichi's Coloring Artwork") which was popular in the 1940's and 1950's.
| Open days | Saturdays and Sundays
| Opening hours | Noon to 6:00 pm (March to October), 11:00 am to 5:00 pm (November to February)
| Admission fee | Adults (junior high school and above) 500 yen, elementary school students 100 yen, preschoolers free



5 Yuinomori Arakawa

(2-50-1 Arakawa)

This is a complex of the central library with a great collection of about 600,000 books, the Yoshimura Akira memorial literary museum (who was a writer from Arakawa City), a learning lounge where you can enjoy hands-on kits and workshops, and a play lounge where parents and children can play with peace of mind, even on a rainy day.
| Opening hours | 9:30 am to 8:30 pm
| Days closed | Third Thursday each month, special administrative days, New Year holidays, etc.



6 Mikawashima Water Reclamation Center

(8-25-1 Arakawa)

It is the first modern water reclamation facility in Japan and started operations in 1922. You can take a tour of the pump station and sewage treatment process at the former Mikawashima sewage disposal site, which is a nationally designated important cultural property (reservation required).
△Pump station at the former Mikawashima sewage disposal site
Reservation for tours (except Tuesday and Friday)
| Inquiry | 03-6458-3940
△Reservation to visit to processing facility (weekdays only)
| Inquiry | 03-3241-0944



7 Arakawa Shizen Park

(8-25-3 Arakawa)

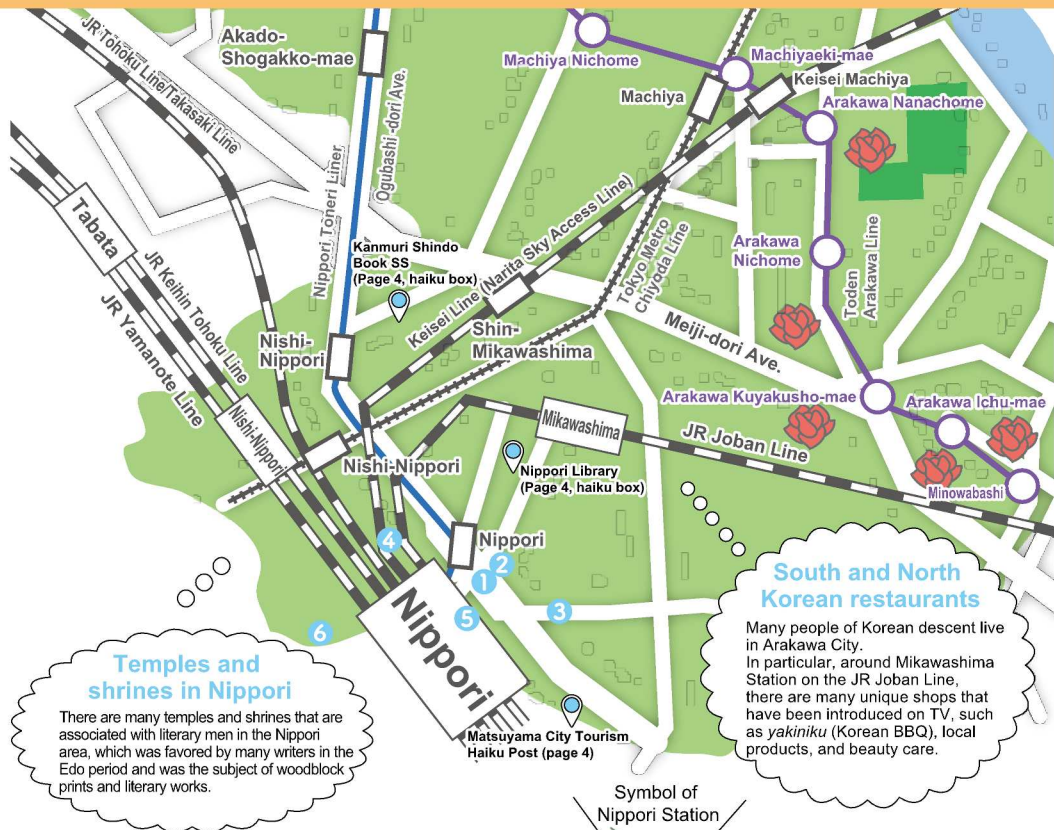
The park, which has been selected as one of Tokyo's "100 New Famous Views of Tokyo", has an artificial pond that models the terrain of Arakawa City, and a traffic park where you can enjoy learning about traffic rules.
| Days closed | 1st and 3rd Thursday (When a closing day falls on a national holiday, the following day will also be closed)

Flowers are in full bloom every season in Arakawa Park, located in front of the Arakawa City Office.



Nippori area

Since the middle of the Edo period, the Nippori area has been called "Higurashi no Sato", meaning "a village you will never get tired of, even if spending the whole day there." Subsequently, in 1877, the area that was originally called "Niihori" was officially stylized as "Nippori." Nippori has a modern landscape due to redevelopment, but once you get away from the station, you will find old-fashioned streets, such as the fabric wholesale street and Yanaka. Nippori is an area with something old and new, making it ideal for exploring on foot.



Temples and shrines in Nippori

There are many temples and shrines that are associated with literary men in the Nippori area, which was favored by many writers in the Edo period and was the subject of woodblock prints and literary works.

South and North Korean restaurants

Many people of Korean descent live in Arakawa City. In particular, around Mikawashima Station on the JR Joban Line, there are many unique shops that have been introduced on TV, such as *yakiniku* (Korean BBQ), local products, and beauty care.

Symbol of Nippori Station



Nippori Dokan Festival (Nippori Eki-mae event square)

Ota Dokan, a military commander who was active in the late Muromachi period and early Sengoku period, is known for having built Edo Castle, and has remained well-known since then. Dokan is said to have built a fort near Nishi-Nippori 4-chome in Arakawa City, and the highland area to the northwest of Nishi-Nippori Station is called Dokanyama (meaning "Mt. Dokan"). At the Nippori Dokan Festival, local governments and stores related to Ota Dokan sell products, engage in public relation promotions, etc.

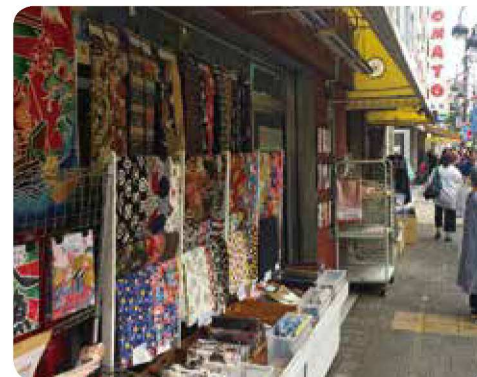
| Event date | November



1 Statue of Ota Dokan "Kaiten-issshi" 2 Statue of "Yamabuki no hana-issshi"

The bronze statue of Ota Dokan is located at the roundabout at the east exit of Nippori Station and was created by monk and sculptor Hashimoto Katsudo.

The "Yamabuki no hana-issshi" statue is a work of the sculptor Hirano Senri, which depicts the likeness of a daughter who gave Yamabuki flowers to Dokan in *Yamabuki no Sato Densetsu* ("The Legend of Yamabuki Village").



3 Nippori Fabric Town

(Around Higashi-Nippori 3-chome to 6-chome)

Fabrics and Textile shops are lined up for about 1 km on both sides of the street, and you can find everything related to fabrics and textiles here. Design contests and fashion shows are held to promote the name of Nippori Fabric Town to the entire Japan.

Great trainspotting location!

4 Shimogoiinden-bashi Bridge "Train Museum"

(2-58 Nishi-Nippori)

Shimogoiinden-bashi Bridge is an overpass that connects the east and west of ends of Nippori Station. There is a balcony called the Train Museum in the middle of this bridge, and you can see about 2,500 trains of 21 types per day, including on the JR Lines (high speed and conventional trains) and Keisei Line (Narita Sky Access line).



5 Nippori Tourist Information

(In front of Keisei North Gate, Nippori Station)

At the Nippori Tourist Information, which is located in Nippori Station, tourist brochures are distributed, and staff members provide information.

Support in foreign languages is available, too. When you come to Arakawa City, stop here for information first.

| Operating hours | 10 am to 4 pm

| Regular holiday | New Year holidays



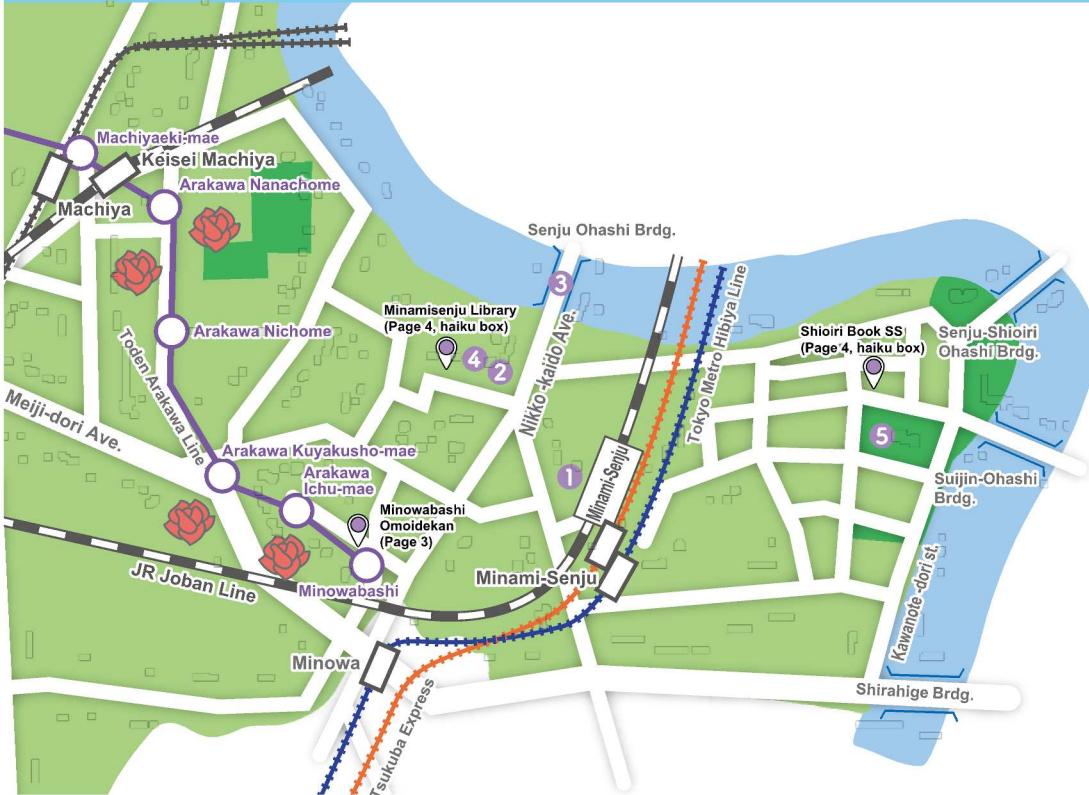
6 Yuyake Dandan and Yanaka Ginza

(Nishi-Nippori 3-chome to Yanaka 3-chome in Taito City)

Yuyake Dandan is a staircase where you can see the beautiful sunset and was so named by an open call for naming. Try to find cat-shaped objects (wooden sculptures) on the rooftops of stores in Yanaka Ginza (Yanaka Ginza Shopping Street), which has a retro atmosphere.

Minami-Senju area

Since ancient times, the Minami-Senju area has prospered as a base for land and water transportation and as the first post-town on the Nikko route from Edo to Nikko. Today, you can enjoy the historical look of the area and the Shioiri area new town, where large-scale urban development is progressing through redevelopment.



4 Arakawa Furusato Museum (6-63-1 Minami-Senju)

A facility where you can learn and explore the history and culture of Arakawa City. Exhibits from excavated ruins in Arakawa City, including medieval plate monuments, life in towns and farm villages of the modern times, work scenes of Zeniza, materials related to restored houses around 1966 and Oku no Hosomichi, etc. are permanently on exhibit. Three times a year, the center displays feature exhibitions as well as exhibitions of a collection of various materials. In addition, the Arakawa Traditional Crafts Gallery (no entrance fee) displays the works of craftsmen in the city, and holds demonstrations and workshops about once a month.

Opening hours | 9:30 am to 5 pm
Viewing fee | 100 yen

Days closed | Mondays (national holidays, if Monday is a national holiday, then the next day), 2nd Thursday (administrative day), and New Year holidays



TOKYO SKYTREE® can be seen along the Sumida River.

5 Metropolitan Shioiri Park (8-7 and 13 through 16 Minami-Senju)

Built along the Sumida River, this park is a 12.9-hectare metropolitan park that was constructed as part of the Minami-Senju 8-chome Shirahige-nishi area urban redevelopment project. The park is furnished with facilities such as the Fureai Plaza with its comfortable lawn, a sundial surrounded by flowers, and the Playground Equipment Complex, which is popular with children. In addition, the large embankment adjacent to the park is also used as a walking path and cycling road, and cherry blossoms bloom along the road in spring.



Shioiri Waterside Festival (Metropolitan Shioiri Park)

An event based on the concept of relaxing and enjoying the Sumida River waterfront space, which is adjacent to Arakawa City. You can enjoy waterside cafes, trams, performance shows, hands-on events, etc.

Event date | Early September

Minowabashi Station on the Toden Arakawa Line, where colorful roses bloom



1 Statue of Matsuo Basho (4-5 Minami-Senju, Minami-Senju Station West Exit Roundabout)

On March 27, 1689 (May 16 in the solar calendar), Matsuo Basho boarded a boat at the south end of Senju Ohashi Bridge and set out on a journey, the "Oku no Hosomichi", from Minami-Senju. The bronze statue, which was erected in commemoration of the Oku no Hosomichi Summit held in March 2015, was created by sculptor Hirano Senri.



2 Susanoo-Jinja Shrine (6-60-1 Minami-Senju)

It is a shrine with chapters in the 61 most expansive towns of the area (Minami-Senju, Minowa, Mikawashima, and Machiya). A haiku monument of Yatatehajime, which inscribes Matsuo Basho's haiku for the departure on his "Oku no Hosomichi" journey (a designated cultural property of the city), was built by literary men who gathered at Senju-juku in 1820.



3 Senju Ohashi Brdg. (Near 6-71 Minami-Senju)

This is the first bridge built by Tokugawa Ieyasu in Edo, in 1594. This is the northern gateway to Edo, and Matsuo Basho also left from here for the Oshu region. It is also depicted in "Senju no Ohashi", part of Utagawa Hiroshige's 100 Famous Views of Edo.