



Oji Sta.

Kitasenju Sta.

Ikebukuro Sta.

Sugamo sta.

Machiya Sta.

Minamisenju Sta.

Nippori Sta.

Ueno Sta.

Asakusa Sta.

Korakuen Sta.

Okachimachi Sta.

Oshiage Sta.

Shinjuku Sta.

Tokyo Sta.

Arakawa City Official Website

<https://www.city.arakawa.tokyo.jp/>

Arakawa City Twitter

@arakawakukoho

Arakawa City Facebook

<https://www.facebook.com/city.arakawa>



Tourism Promotion Division, Industrial Economy Department, Arakawa City

2-2-3 Arakawa, Arakawa City, Tokyo 116-8501
TEL 03-3802-4689

Issued March 2020. Registration: (01) 0084

Come see

Arakawa!

Welcome to Arakawa



Ryogoku

Japan National Stadium

Imperial Palace

Tokyo Metropolitan Government

Sunshine City

Yanaka Town

Ueno Zoo

Tokyo Dome City

Sensoji Temple

Tokyo Skytree

Statue of Matsuo Bashi

Mikawashima Water Reclamation Center

Korean Restaurants

Nippori Fabric Town

Statue of Ota Dokan

Mikawashima Sta.

Yuinomori Arakawa Library

Arakawa Museum

Furusato Museum

Nurie Art Museum

Arakawa Yuen Amusement Park

Toden Arakawa Line

Sumidagawa River

Monjayaki

Yanaka Shrine

Susanoo-jinja Shrine

Come see Arakawa!



Arakawa Attractions 1	Toden Arakawa Line	3
Arakawa Attractions 2	Haiku Town Arakawa	4
Arakawa Attractions 3	Monjayaki	4
Arakawa Attractions 4	Shopping streets	4
Arakawa Attractions 5	Handicraft tours and experiences	5
●	Arakawa City tourism app, Arakawa Walk	6
●	Arakawa City sightseeing volunteer guides	6
●	Arakawa sightseeing map	7
●	Arakawa/Machiya/Ogu areas	9
●	Nippori area	11
●	Minami-Senju area	13

Arakawa City is a town that celebrates person-to-person fellowship with a mix of novelty and nostalgia. The City maintains historical sites and an old school atmosphere everywhere while promoting modern developments in each region.

Arakawa City has various sightseeing and historical resources that represent the area, such as Toden Arakawa Line, Arakawa Amusement Park, Sumida River and traditional crafts.

In addition, the city is proud of the unique history, traditions, culture, industries, and personality of old town areas as precious resources that have been cultivated in each region.

Please visit Arakawa City and discover its unique charm.

△The information in this magazine is current as of March 2020. Content is subject to change.



| City Tree | Cherry blossom



| City Flower | Azalea



Kawanote Arakawa Festival
| Event date | April 29 every year

Arakawa City Symbolic character



Arabou

Arami

1 Toden Arakawa Line

The Toden Arakawa Line is a tram that runs for 12.2 km (30 stations) from Minowabashi (Arakawa City) to Waseda (Shinjuku City) in about 60 minutes. Along this line throughout Arakawa City, about 140 species of roses, receiving the “Floral Tourism Destination Creation Award” during flowering season, can be seen in full bloom. The best viewing times are mid-May to early June, and mid-October to early November.



Special train operation

Toden Arakawa Line operates specially themed coaches for a limited period of time.

| Annual operation schedule |

- Toden Sakura Train Mid-March to Mid-April
- Toden Bara (Rose) Train May
- Toden Halloween Train October

| Operating Trains |

- 9001 type (red retro train) or
- 9002 type (blue retro train)

Points of Interest



Toden Omoide Hiroba (Arakawa Shako-mae Station)

At Toden Omoide Hiroba in the Arakawa Train Office of the Tokyo Metropolitan Bureau of Transportation, two priceless antique Toden trains are on display in a space that resembles a historic station with old-fashioned photographs of the trams on exhibit inside the cars. In addition, events are held to commemorate “Tram Day” on June 10 and “Arakawa Line Day” on October 1.

| Days Open | Saturdays, Sundays, and public holidays, except New Year holidays

See page 9 on the map



Shitamachi Toden Mini Museum (In Arakawa Amusement Park)

At Shitamachi Toden Mini Museum in Arakawa Amusement Park, there are permanent exhibits of tram models and memorable Toden-related items provided by the Tokyo Metropolitan Bureau of Transportation. The railway documents room (library) is also on exhibit in the museum. Also, at the train model driving yard, children are welcome to drive N-gauge model trains.

△ Currently closed due to renovation work. Reopening is planned for spring 2022.

See page 9 on the map



Minowabashi Omoidekan (Minowabashi Station)

The Minowabashi Station is one of the 100 best stations in the Kanto area, and was refurbished in 2007 in a 1950s retro style. Minowabashi Omoidekan, located next to the station, provides information on Toei Transportation, tourist brochures, day passes, commuter passes, goods, etc.

| Holidays | Tuesdays, Wednesdays (including public holidays), New Year holidays

See page 13 on the map

2 Haiku Town Arakawa



Arakawa City is the place where famous haiku poets such as Matsuo Basho, Kobayashi Issa, and Masaoka Shiki wrote many haiku poems. Haiku monuments are found all around the city. The city is known as “Arakawa, City of Haiku” and holds various haiku related events, such as “Arakawa, City of Haiku, Haiku Photo Contest”, which combines haiku with photographs taken in the city.

Try writing a haiku!



Matsuyama City
Tourist Haiku Post



Arakawa Haidan box

Left: Featured in the haiku, “Imozaka mo dango mo tsuki no yukari kana” (“Both Imozaka and dango are related to the moon”), by Masaoka Shiki, and in a novel, “Wagahai Wa Neko Dearu” (“I Am a Cat”) by Natsume Soseki, the Habutae Dango main shop features, a tourist haiku post from Matsuyama City in Ehime Prefecture, connected to both Shiki and Soseki. Haiku submitted here are sent to Matsuyama City once every three months for selection.

See page 11 of the map

Right: A haiku box is placed at each library in the city, Yuinomori, Arakawa, etc. You can place your poem into a poem box for the Arakawa Haidan (Arakawa haiku contest), which is held four times a year, or for the Sakura haiku meeting at the Shidarezakura Festival (weeping cherry festival).

See pages 9-14 on the map

3 Monjayaki

For details on each location, check the Arakawa City tourism app (page 6)

Did you know that there are many monjayaki restaurants in Arakawa City, especially in the Arakawa and Machiya areas?

From the standards to the many varieties, each restaurant has its own unique take on monjayaki, so do please try and find your favorite.



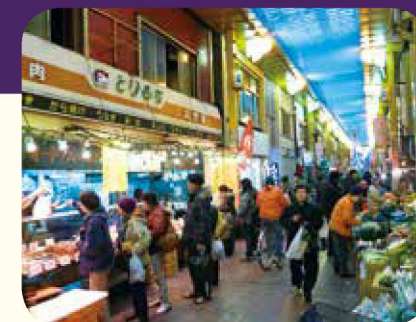
The Arakawa and Machiya areas used to have many candy stores.

Monjayaki has long been a popular snack for children.

4 Shopping streets

In Arakawa City, there are many shopping streets filled with an old town atmosphere. At present, 40 shopping streets are members of the Arakawa City Shopping Street Group.

The shopping streets are used in filming for TV dramas and commercials from time to time, and various shopping streets in the city often appear on screen. Please come to the charming shopping streets in Arakawa City, where you'll be shopping, having fun, and coming back for more.



Handicraft tours and Activities



Arakawa City, a town of handicrafts, actively introduces excellent products manufactured and sold in the city, and well known as the Arakawa Brand, both inside and outside the city. Also, in order to promote handicraft in Arakawa City for more people, the city is introducing factories and studios where handicraft tours and workshops, provided through the cooperation of business owners, offer you a tour through the creation process or a workshop to experience handicrafts.



Arakawa City tourism app, Arakawa Walk

The Arakawa City tourism app, Arakawa Walk is an app for smartphones that allows you to search for recommended information useful for going out and sightseeing. In addition to introducing parks and sightseeing spots in the City, the app provides functions for enjoying a walk, such as an Ukiyo-e map and photo rally.

You can access it via this QR code.



- Using while walking is dangerous. Please stop walking and use it in a safe place.
- No fee – the information is free. Note however, communication charges will be borne by the user.
- It may not function in certain cases, depending on the communication environment, model, OS version, etc.



*The image is for illustration purposes.

Arakawa City Sightseeing Volunteer Guides

The Arakawa City Sightseeing Volunteer Guides will guide you through sightseeing spots, historic sites, and cultural assets in the city. Please make good use of them when you visit and walk around Arakawa City!

How to apply

Please apply by phone, fax, or e-mail to the Arakawa City Sightseeing Volunteer Guides Association Secretariat two weeks before your desired date of use. The office will ask about your details such as schedule and itinerary.

Eligible to apply

Groups (consisting of 8 people or more in principle)

Days of operation

Every day except New Year holidays (December 29 to January 3), the Obon holiday period (July 13 to 16), and the entire month of August

Hours of operation

Up to 3 hours between 9:30 am and 4 pm (flexible)

Usage fees, etc.

The guide services are free. Reading materials are also generally provided free of charge. However, if you take a guide to a place by public transportation or anywhere that requires an entrance fee, admission fee, incense fee, etc., you may be required to pay such fees for the guide.

Application/Inquiries

Arakawa City Tourism Volunteer Guide Association Secretariat
 (In the Tourism Promotion Division, Industrial and Economy Department, Arakawa City)
 Phone: 03-3802-4689
 FAX: 03-3803-2333
 Email: kankou@city.arakawa.tokyo.jp

Look for this signboard!



You will discover handicrafts are not easy, requiring high skill levels, from your own actual experience of making something with your own hands, such as original ring notebooks, engraved rings, or small leather goods.



For details, check out the Handicraft Tour/ Activity Spot Guide!



Arakawa Traditional Handicraft Fair

Arakawa sogo Sports Center

Arakawa Meister and traditional craftsmen from inside and outside the city gather to perform demonstrations, exhibitions, and sales, with a focus on traditional crafts technique holders living in Arakawa City.

| Event date | July (June in 2020)